

10 LION



10 LION



10 LION



10 LION



9 Hyena



9 Hyena



9 Hyena



9 Hyena



8 Leopard



8 Leopard



8 Leopard



8 Leopard



7 baboon



7 baboon



7 baboon



7 baboon



6 Zebra



6 Zebra



6 Zebra



6 Zebra



5 Antelope



5 Antelope

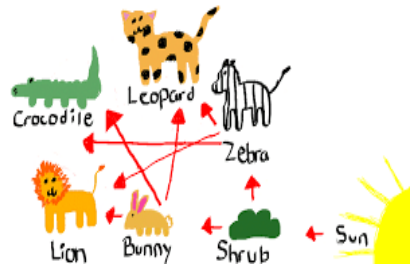


5 Antelope

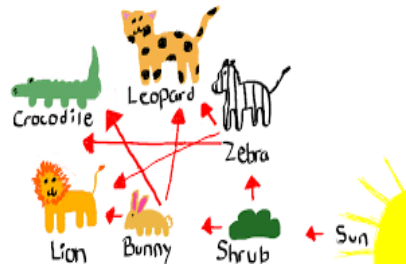


5 Antelope

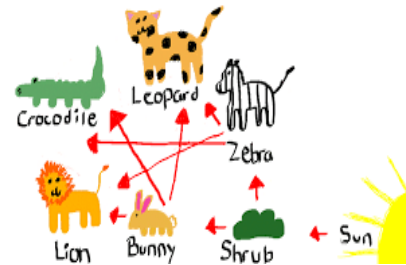
SURVIVAL IN THE SAVANNAH!



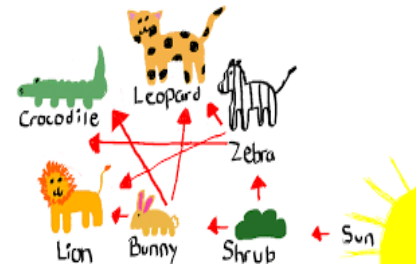
SURVIVAL IN THE SAVANNAH!



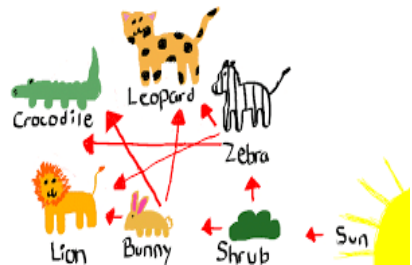
SURVIVAL IN THE SAVANNAH!



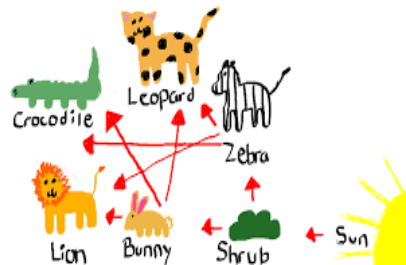
SURVIVAL IN THE SAVANNAH!



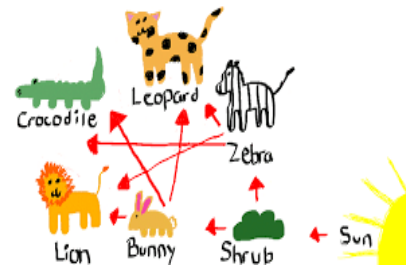
SURVIVAL IN THE SAVANNAH!



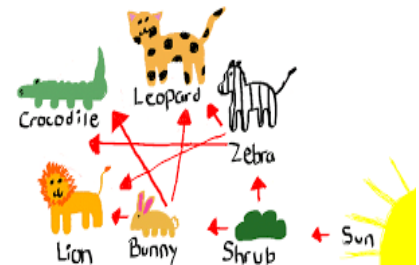
SURVIVAL IN THE SAVANNAH!



SURVIVAL IN THE SAVANNAH!



SURVIVAL IN THE SAVANNAH!





4 Grasshopper



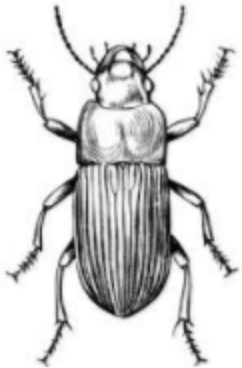
4 Grasshopper



4 Grasshopper



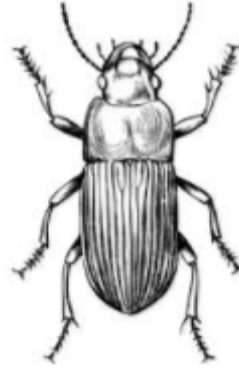
4 Grasshopper



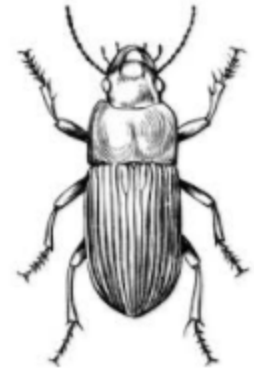
3 Beetle



3 Beetle



3 Beetle



3 Beetle



2 Porkbush



2 Porkbush



2 Porkbush



2 Porkbush



1 Elephant Grass



1 Elephant Grass

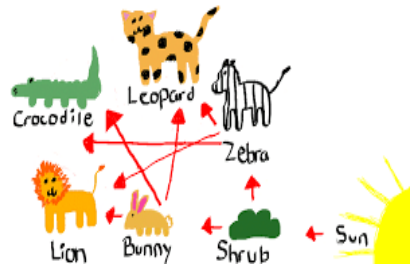


1 Elephant Grass

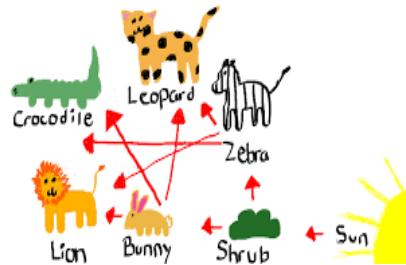


1 Elephant Grass

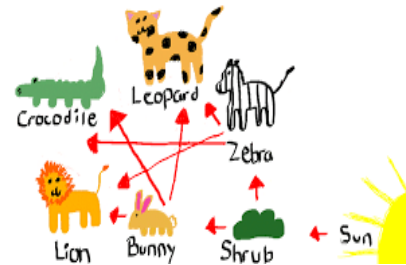
SURVIVAL IN THE SAVANNAH!



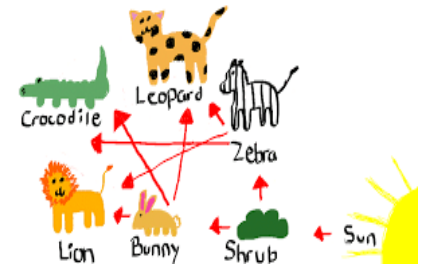
SURVIVAL IN THE SAVANNAH!



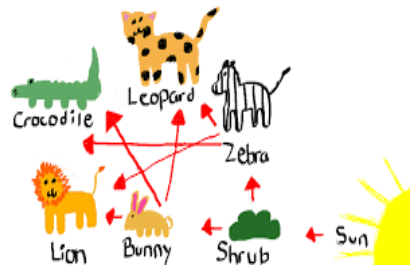
SURVIVAL IN THE SAVANNAH!



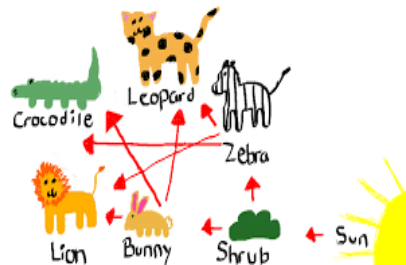
SURVIVAL IN THE SAVANNAH!



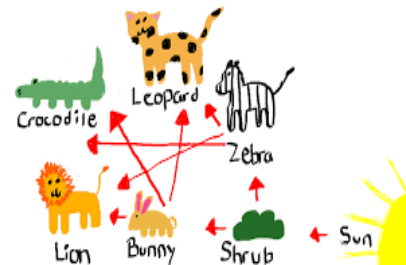
SURVIVAL IN THE SAVANNAH!



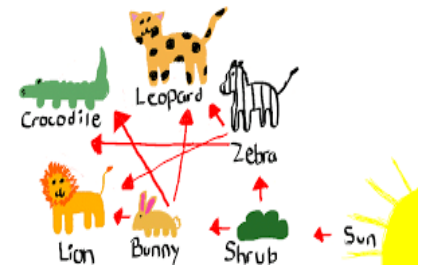
SURVIVAL IN THE SAVANNAH!

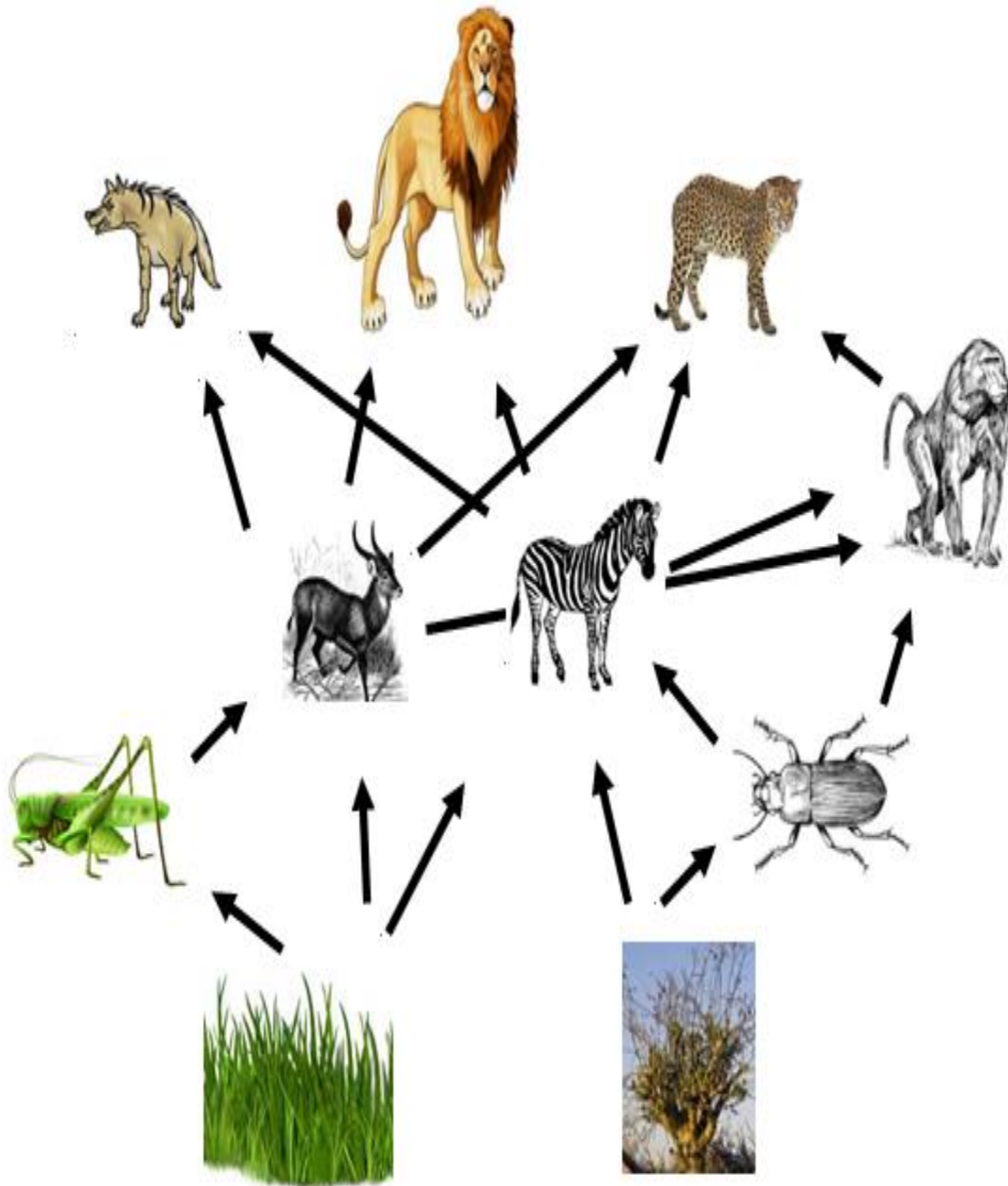


SURVIVAL IN THE SAVANNAH!



SURVIVAL IN THE SAVANNAH!





WAR RULES! Use the cards and each person needs to build the Savannah food web. Discuss and answer the question cards before you begin the game.

1. After all members have answered the questions put the picture cards back in one pile, mix them up, and pass out cards one by one to each player until all cards are gone.
2. Do not look at your cards. Put them all in one pile face down.
3. Each member turns his or her top card over. The person with the card that is the highest in the food web wins that round of competition and keeps all the cards from the other members. You can also use the numbers on the card to determine value.
4. If two or more players pull the highest card, then both players say "competition"!
5. Continue playing cards until one player has the highest card.
6. The winner gets to keep all the cards and place them at the bottom of his or her pile.
7. Continue play until one player has all the cards and becomes the king or queen of the savannah.

<p>What is the source of energy for this food web?</p>	<p>What are the producers in this food web?</p>	<p>What are the consumers in this food web?</p>	<p>Identify one interaction between two living organisms.</p>	<p>Are producers living or nonliving organisms? Explain your answer.</p>	<p>Go around the group one by one, take turns and explain what would happen each organism is removed from the food web.</p>	<p>Name all the organisms that would be affected if humans began hunting and killing all of the zebras.</p>
<p>What would happen if humans decided to build a highway that destroyed all the elephant grass?</p>	<p>The grasshoppers have somehow overpopulated the savannah; explain what the effects will be.</p>	<p>Explain the flow of energy from the elephant grass to the lion.</p>	<p>A food web is made of a series of food chains. How many food chains can you make from this food web?</p>	<p>Find three carnivores and explain how you know they are carnivores.</p>	<p>Find two herbivores and explain how you know they are herbivores.</p>	<p>Explain what would happen if the lions killed the hyenas, leopards, and baboons.</p>