

Plants are a special kind of organism that we call producers.



Producers make their own food in a process called photosynthesis.

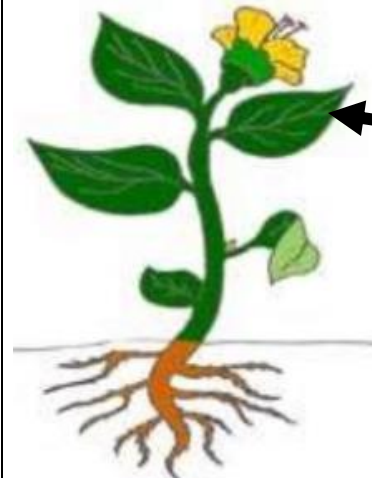
Producers need sunlight, water, and carbon dioxide to make their own food.

Plants have four parts. The flower, stem, leaves, and the roots.



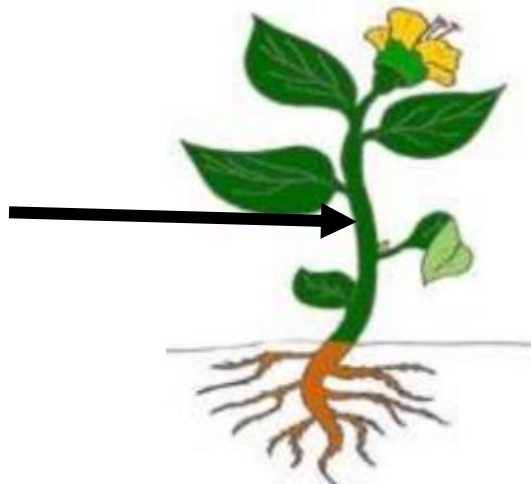


The flower is responsible for reproduction by producing fruits and seeds.

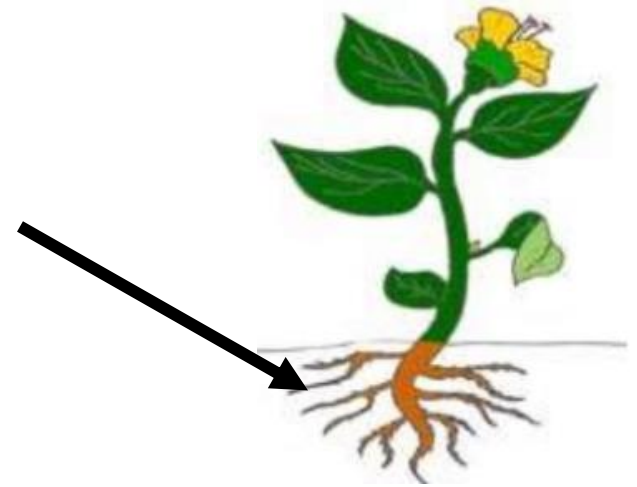


The leaf absorbs the Sun's energy to use in Photosynthesis.

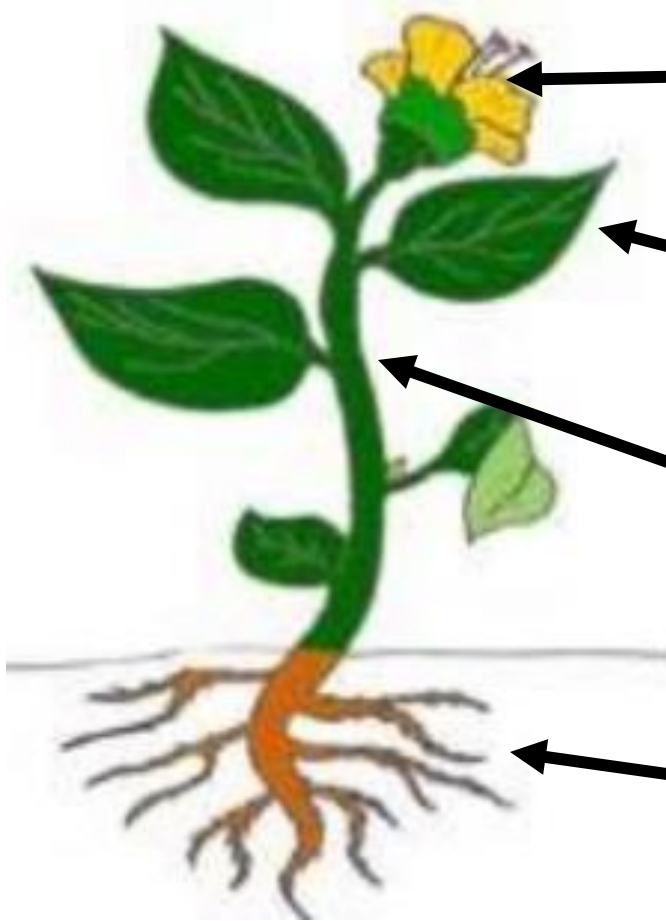
The stem provides support for the flower and the leaves and it transports water and nutrients from the roots to the plant.



The roots spread out in soil to absorb water and nutrients and they provide stability.



Did you know that producers need sunlight, water, and carbon dioxide to make their own food, while consumers are dependent on other organisms for food? Label the parts of the producer below.

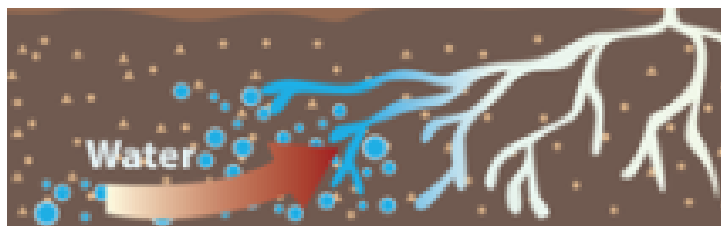


How do plants make their own food?

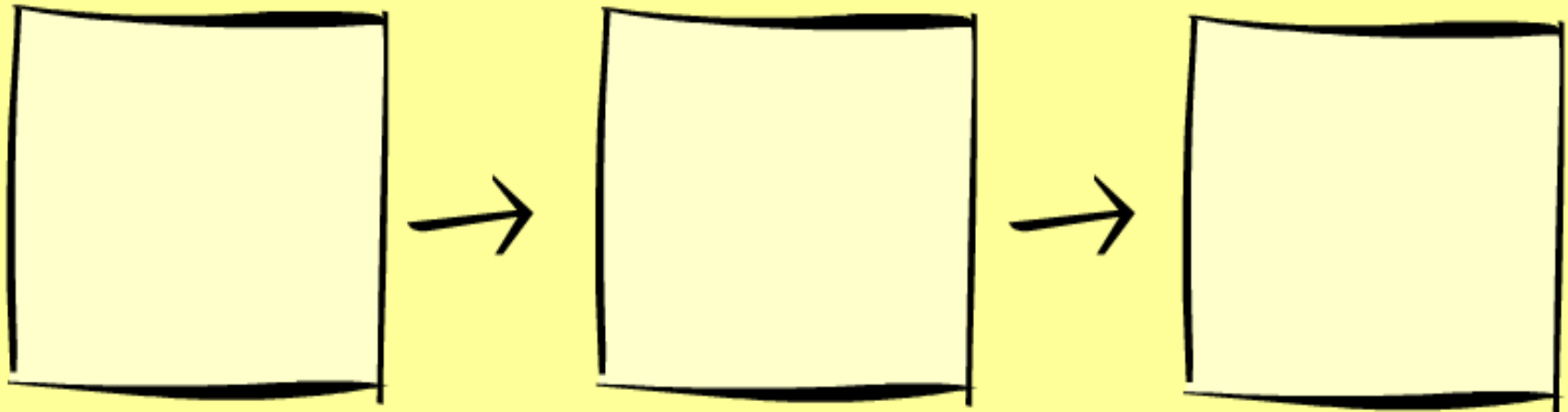
The leaves of a plant take in sunlight which is one of the elements need before photosynthesis can occur. Sunlight is then used to make sugar which comes in the form of food a plant makes.



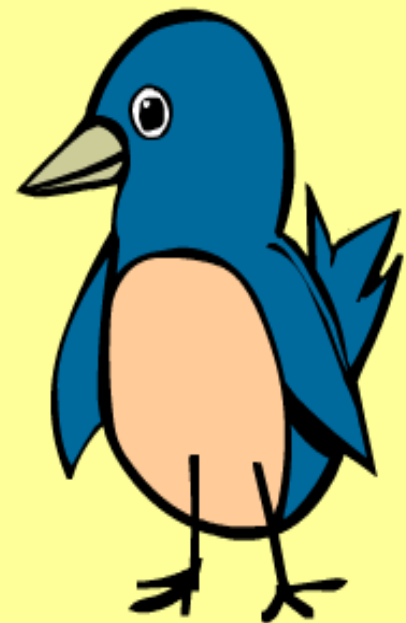
The roots take in water and other nutrients for the plant.



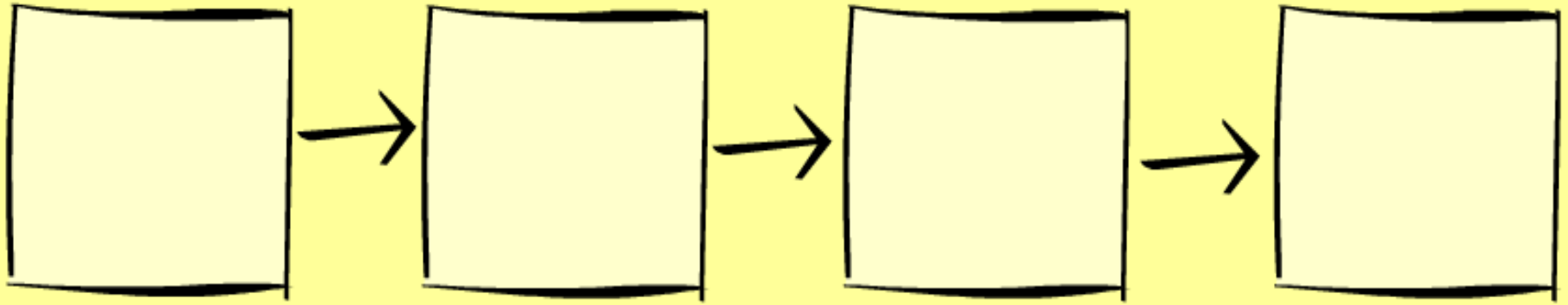
1: Simple Chain



PARTS OF FOOD CHAIN: bird
flower
caterpillar



2: Bigger Chain

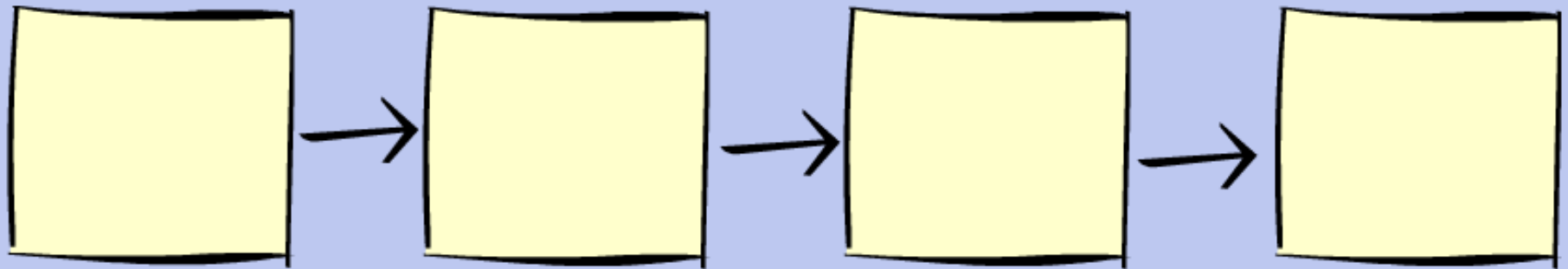


**PARTS
OF FOOD
CHAIN:**

snake
mouse
hawk
acorns

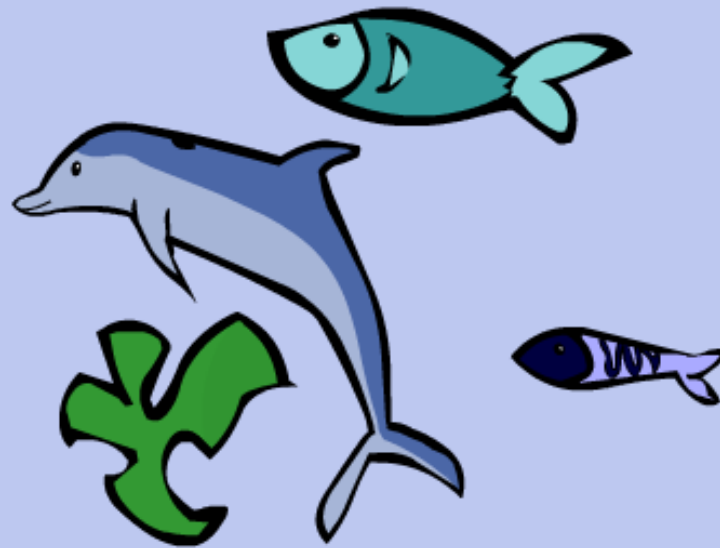


3: Marine Chain

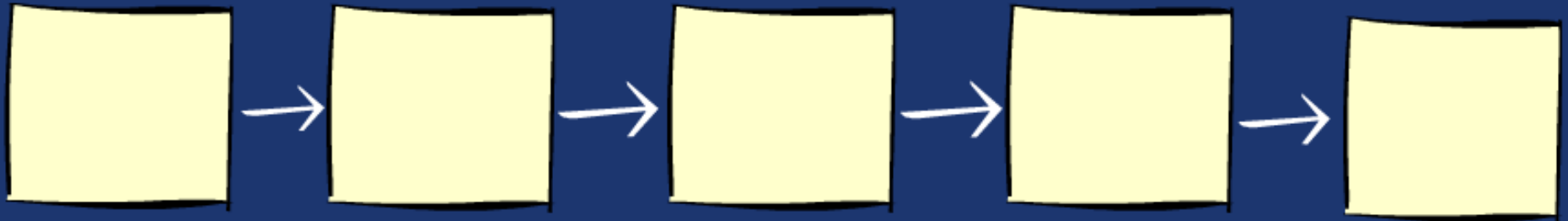


**PARTS
OF FOOD
CHAIN:**

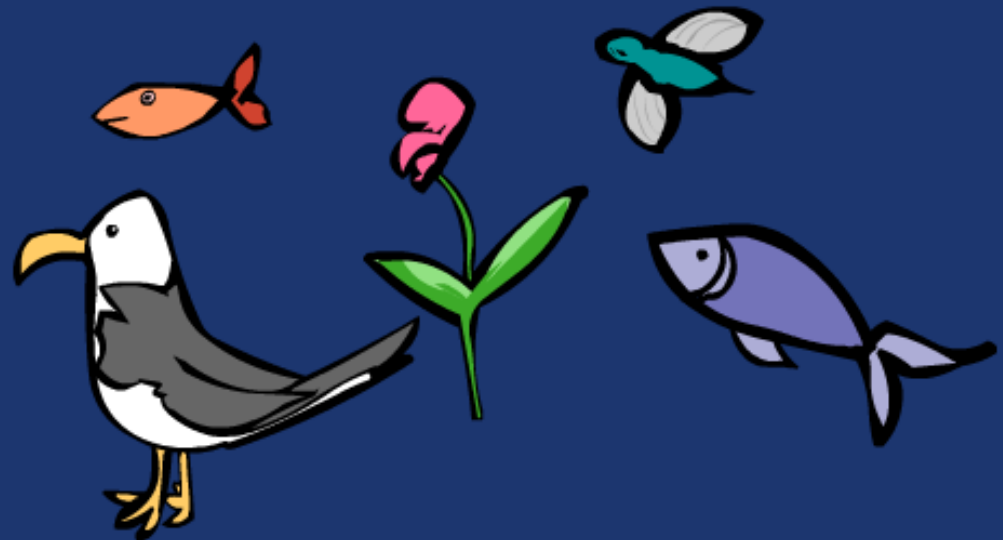
big fish
small fish
dolphin
algae



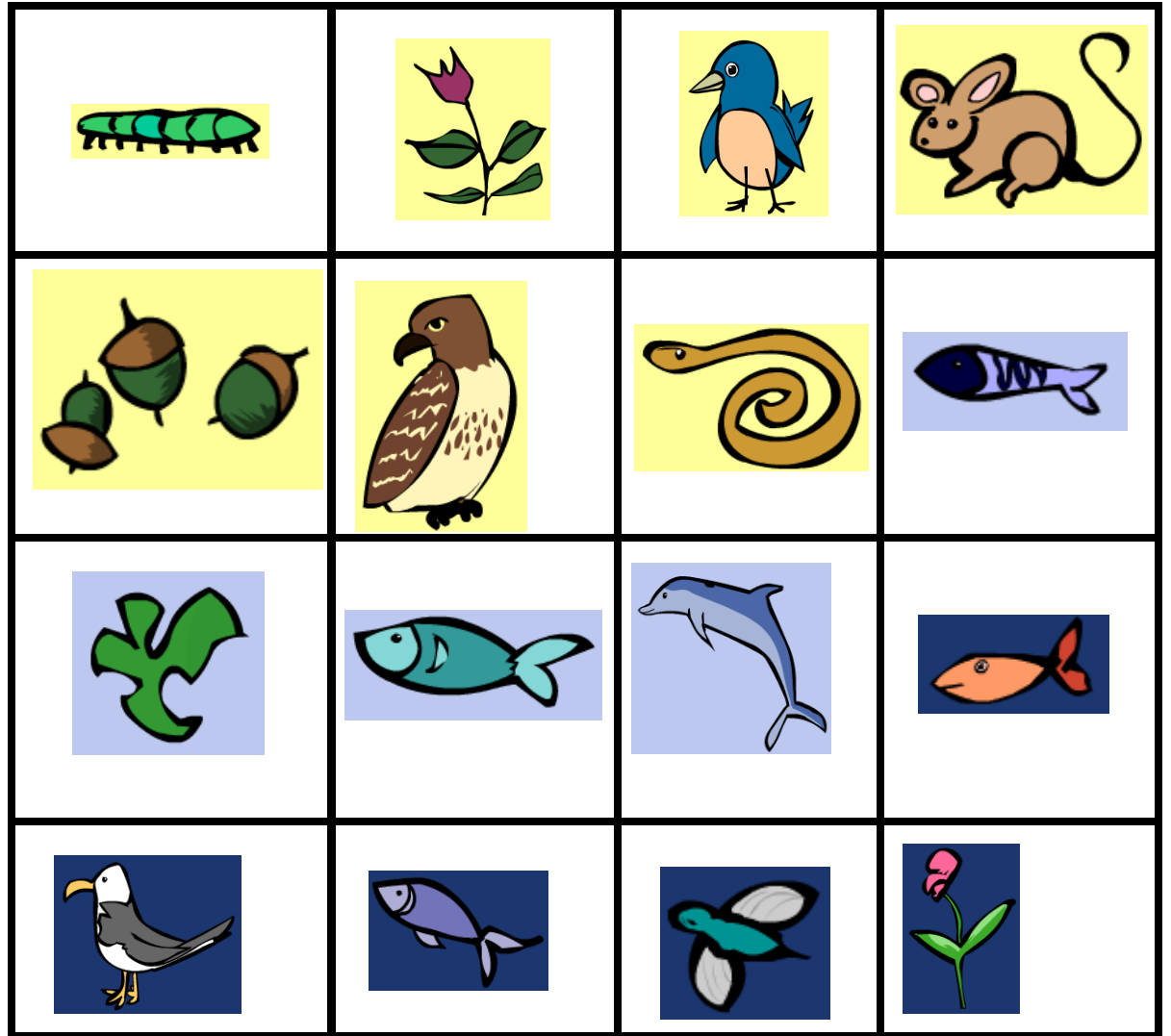
4: Mixed chain



PARTS
OF FOOD
CHAIN:
flower
seagull
big fish
insect
small fish



Use these cut outs to complete the four food chain boards. Use the words at the bottom to complete the part of a flower activity.



Roots

Flower

Stem

Leaf

After completing each food chain, use these cards to guide your group discussion.

Remove one organism from the food chain.

How will the removal of this organism affect this food chain?

After completing each food chain, use these cards to guide your group discussion.

Try to add another organism to the food chain.

How will adding this organism affect this food chain?

After completing each food chain, use these cards to guide your group discussion.

Look at the food chain. Where does the first organism, the producer, get its energy?

After completing each food chain, use these cards to guide your group discussion.

Carnivores are organisms that get their energy by eating other organisms. Find a carnivore in the food chain. Where does this carnivore get its energy?

After completing each food chain, use these cards to guide your group discussion.

Producers are organisms that get their energy from the Sun. Find a producer in the food chain. What would happen to producers if they did not have the Sun? How would this affect the food chain?

After completing each food chain, use these cards to guide your group discussion.

Herbivores are organisms that get their energy by eating producers (plants). Find an herbivore in the food chain. Where does this herbivore get its energy?

After completing each food chain, use these cards to guide your group discussion.

Energy is moving through this food chain. Where does this energy originally come from?

After completing each food chain, use these cards to guide your group discussion.

Describe how the energy is moving through this food chain starting from the Sun.