

**Vocabulary  
Matching**  
Match the  
vocabulary  
word to its  
definition.

**Volcano**

**Rapid change**

**Avalanche**

**Landslide**

**Earthquake**

**Erupt**

**Volcanic Eruption**

**Landform**

A change that  
happens quickly.

When hot lava  
and/or ash  
begins coming  
out of a volcano.

To break open  
suddenly.

A sudden and  
rapid movement  
of rocks and soil  
down a slope.

A mass of snow,  
ice, and rocks  
falling rapidly down  
a mountainside.

A mixture of hot  
rocks, ash, and  
gases that blow  
through a crack in  
the Earth's surface.

A natural feature of  
the earth's surface.  
The way the land  
formed.

A sudden release of  
energy under  
Earth's surface that  
makes the ground  
shake or crack.

**This is Mount. St. Helen before and after a volcanic eruption. The eruption happened suddenly. How do these pictures give us evidence for a rapid change?**



**Before.**

**After.**

---

---

---

---

These are before and after pictures from an earthquake in Nepal. The earthquake happened suddenly. How do these pictures give us evidence for a rapid change?



---

---

---

---

**These are before and after pictures from an earthquake. The earthquake happened suddenly. How do these pictures give us evidence for a rapid change?**



---

---

---

---

These are before and after pictures from an avalanche. The avalanche happened suddenly. How do these pictures give us evidence for a rapid change?



---

---

---

---



**This is a picture taken after the Keelung landslide. The landslide happened suddenly. How does this picture give us evidence for a rapid change?**



---

---

---

---

These are before and after pictures from the Tornado that touched ground in Washington, Illinois. The Tornado happened suddenly. How do these pictures give us evidence for a rapid change?



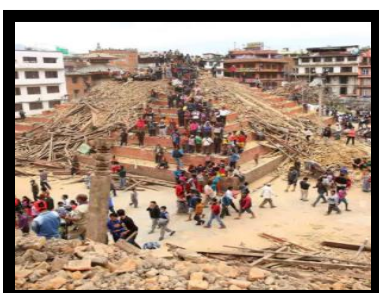
---

---

---

---

## Before and After picture cutouts





**Claim:** Large forces can change the Earth's surface rapidly.

**Evidence:** Find two pictures that provide evidence that our claim is accurate.



**Reasoning:** Use your evidence to explain why the claim is true in three or more sentences.

---

---

---

---

---

---

---

Use the “Before and After” cutouts and the vocabulary words and definitions to complete the flow chart below.

Before Picture

After Picture

What caused the change?

Definition

Before Picture

After Picture

What caused the change?

Definition

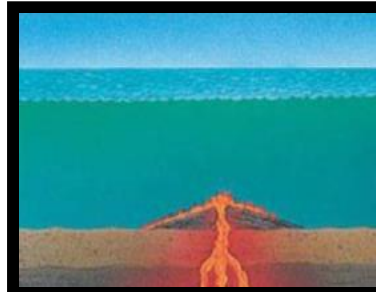
Before Picture

After Picture

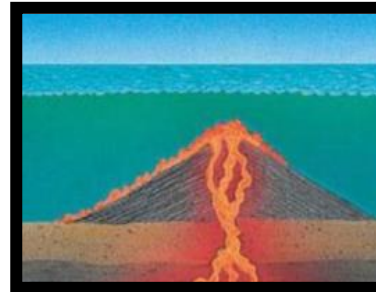
What caused the change?

Definition

Not all forces are destructive forces. Some forces are constructive. That means they build up. This is how some islands are formed. Volcanic lava can be destructive or it can build islands. Sort the pictures and explanations to see two ways islands are formed.



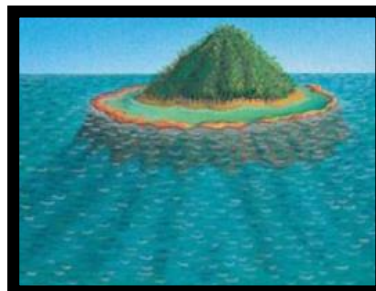
1 Magma sometimes erupts through cracks in the ocean floor.



2. Over time, layers of lava can build up to form a volcanic cone.



3. Some volcanic cones rise above sea level and become islands.



1 Some corals form reefs on the sides of volcanic



2. As the island erodes, the reef continues to grow upward.



3. In time, only the low island of the reef remains.