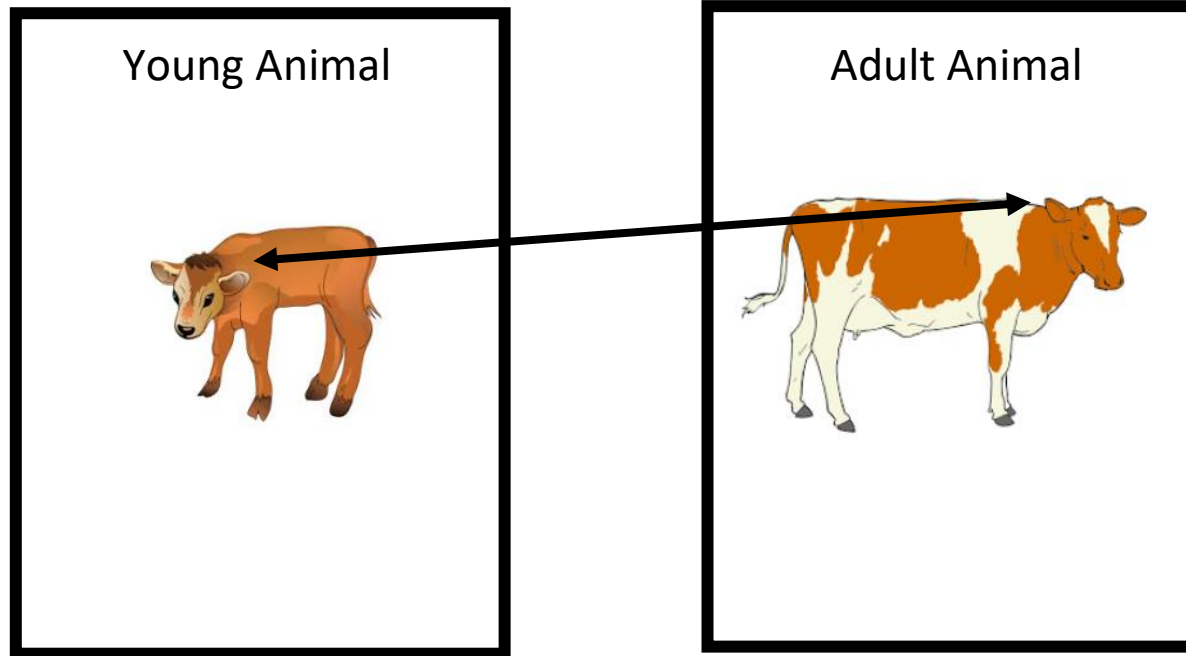


Did you know that young animals resemble or look like their parents? Look at the young and adult animal below.



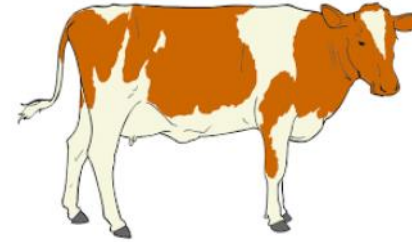
Notice how the young animal's ears have the same shape as the adult animal. Can you find any more similarities?

Compare the calf and its parent.

Young Animal



Adult Animal



How are they similar? How are they different?

Compare the puppy and its parents.

Young Animal



Adult Animal



How are they similar? How are they different?

Compare the duck and its parents.

Young Animal



Adult Animal



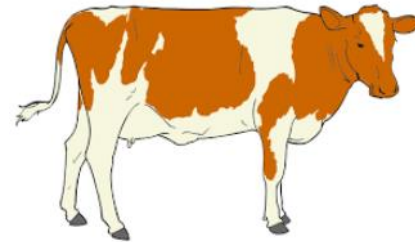
How are they similar? How are they different?

How does the calf resemble its parents?

Young Animal



Adult Animal



How does the young animal look like its parent?

How does the young dog resemble its parent?

Young Animal



Adult Animal



How does the young animal look like its parent?

How does the young duck resemble its parent?

Young Animal



Adult Animal



How does the young animal look like its parent?

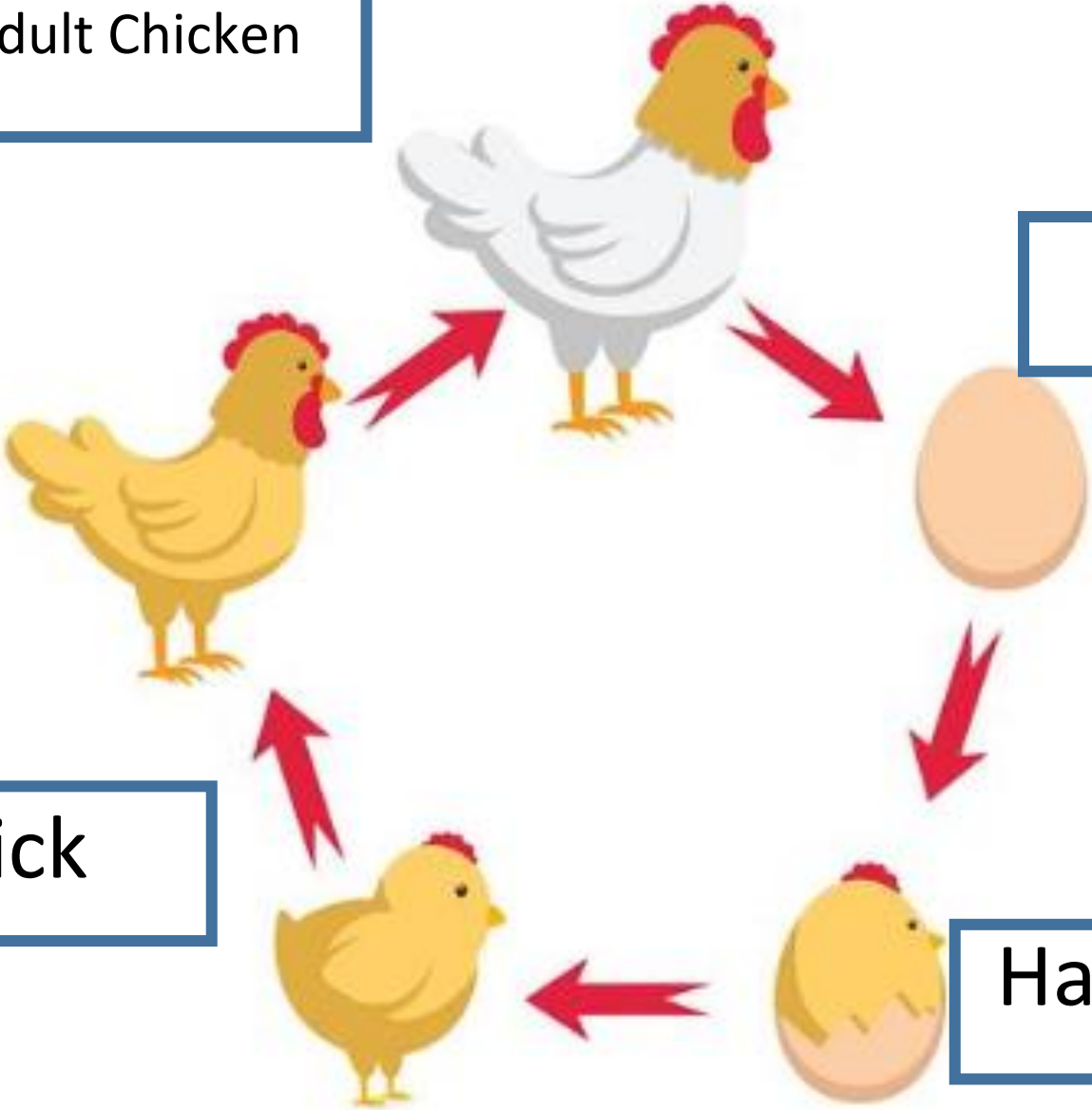
Chicken Life Cycle

Adult Chicken

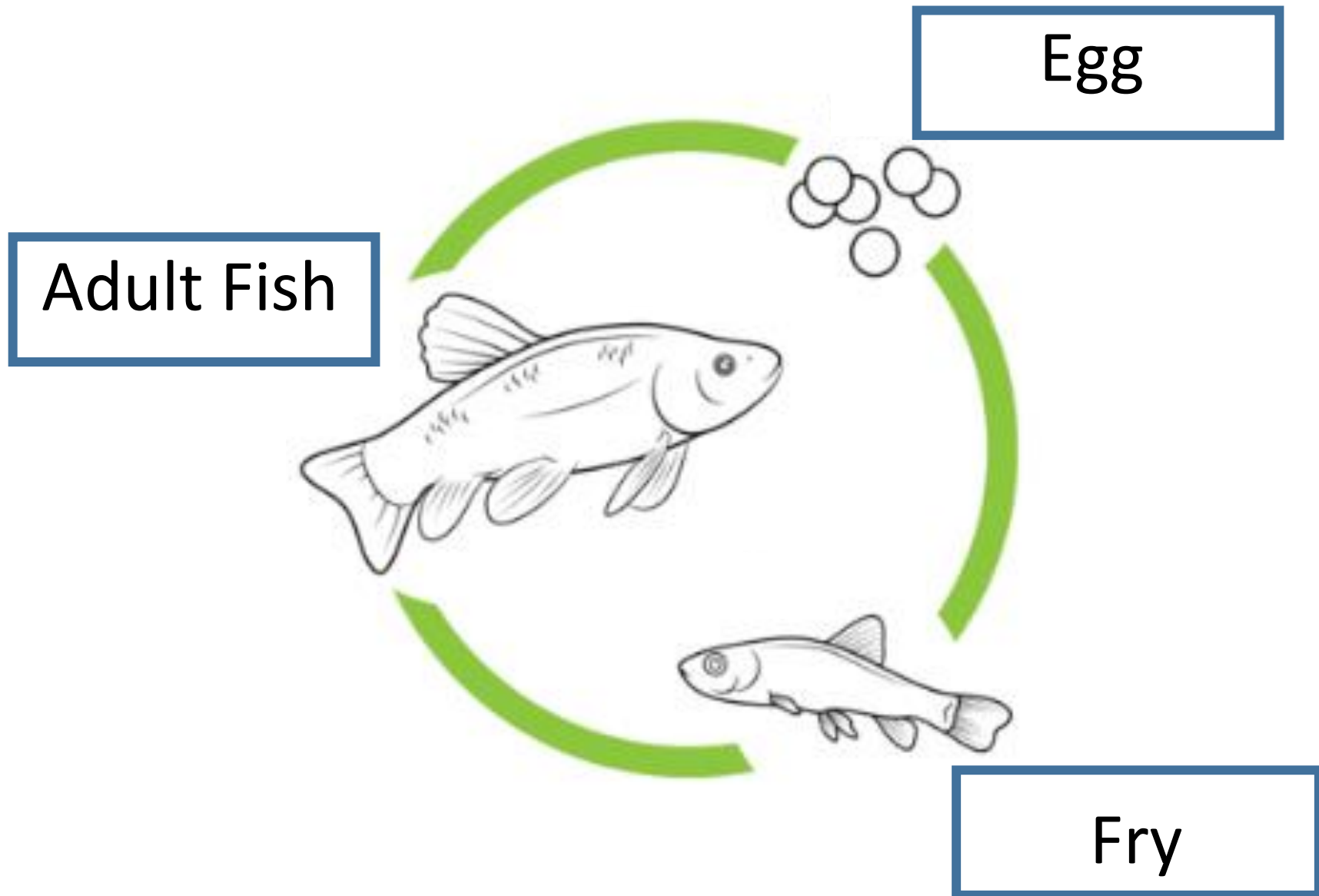
Egg

Chick

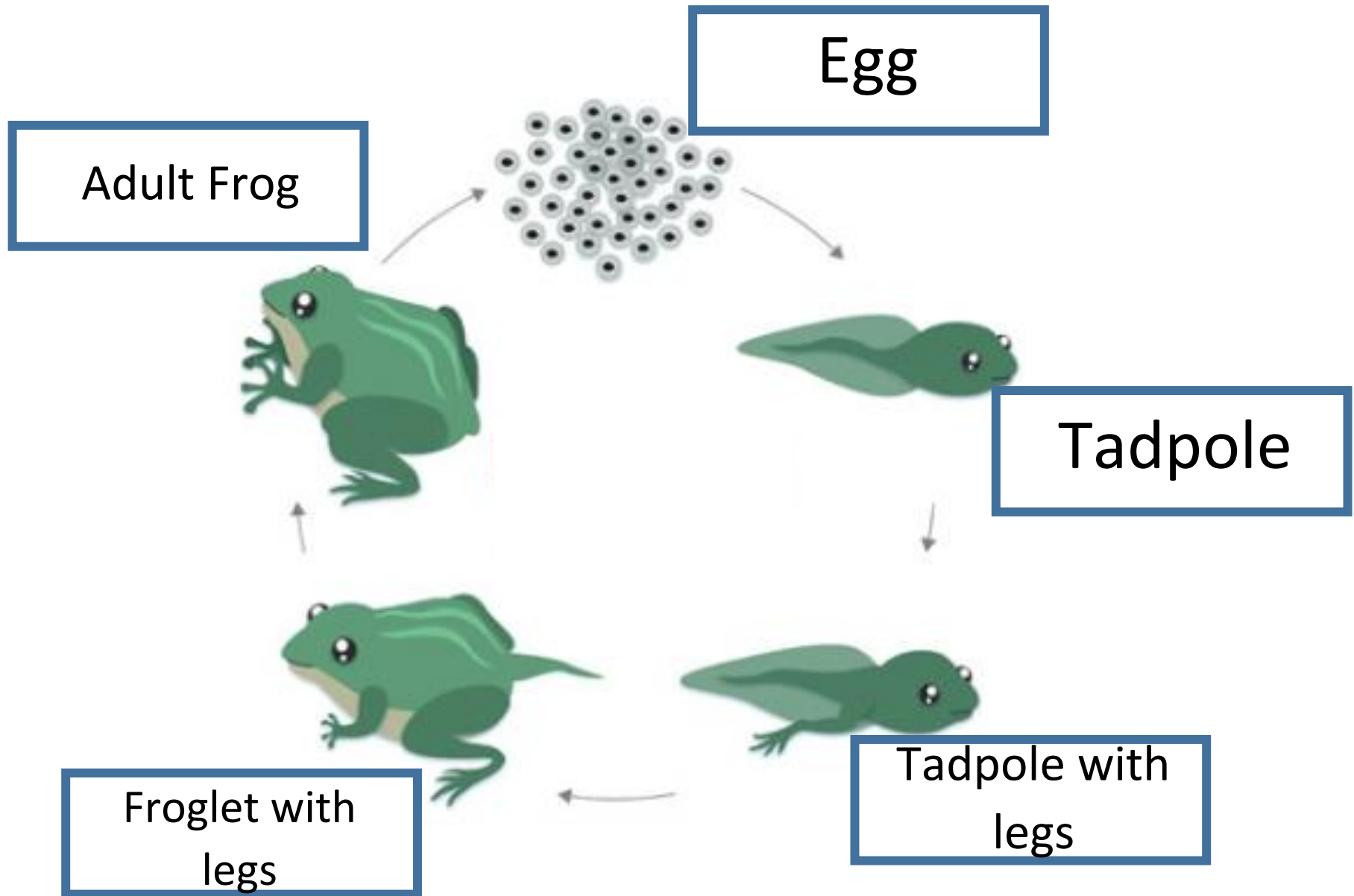
Hatchling



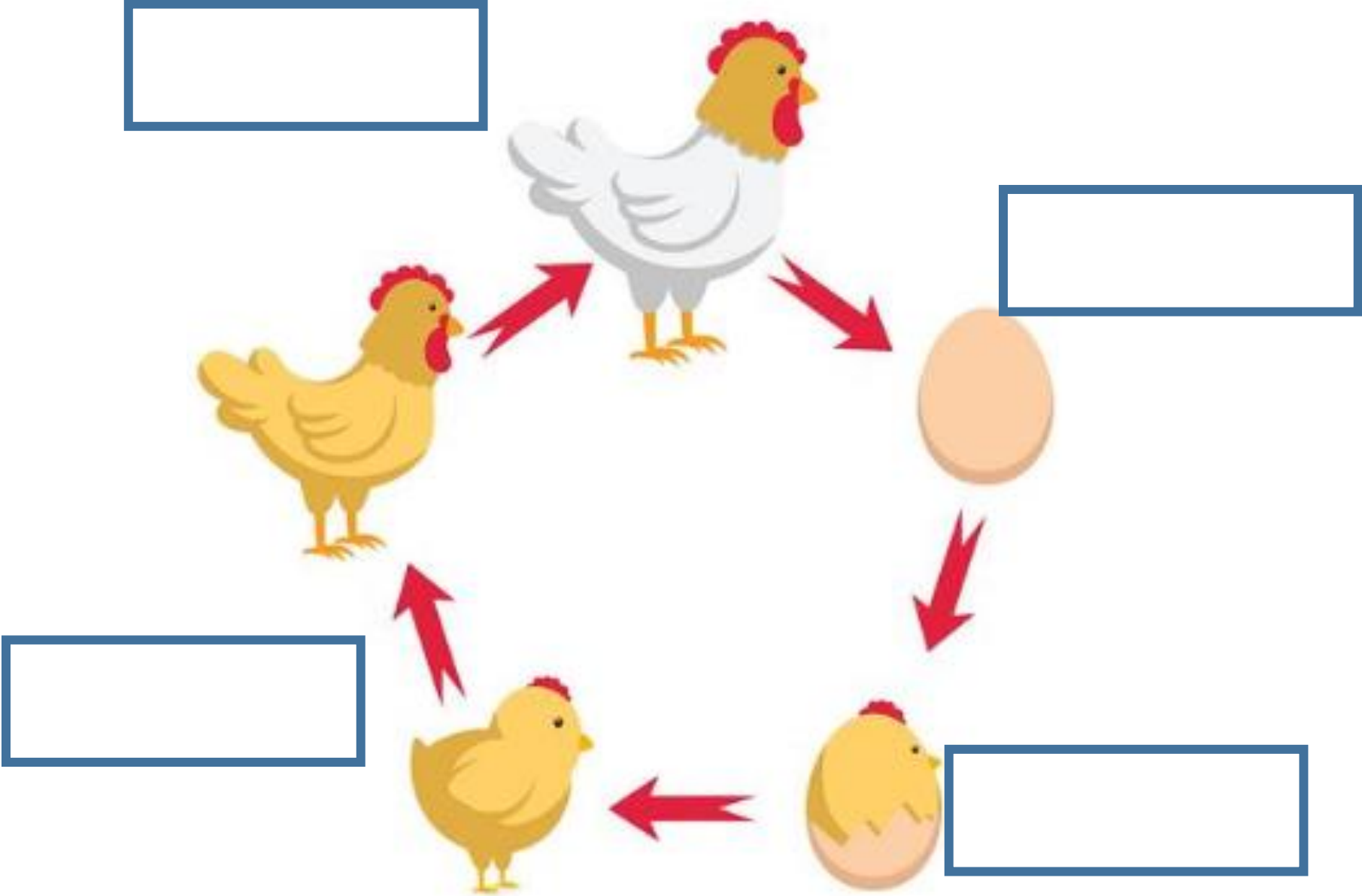
Fish Life Cycle



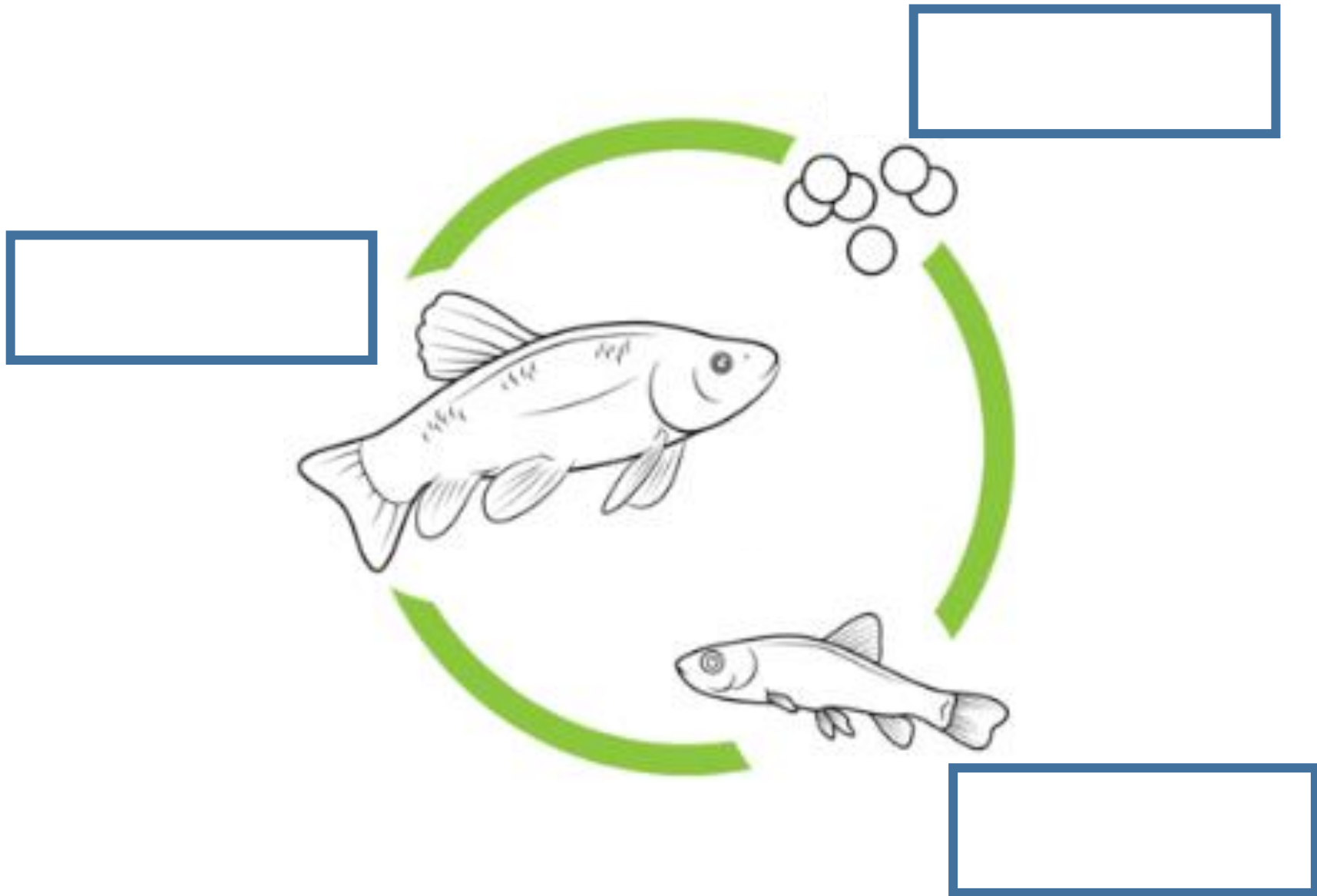
Frog Life Cycle



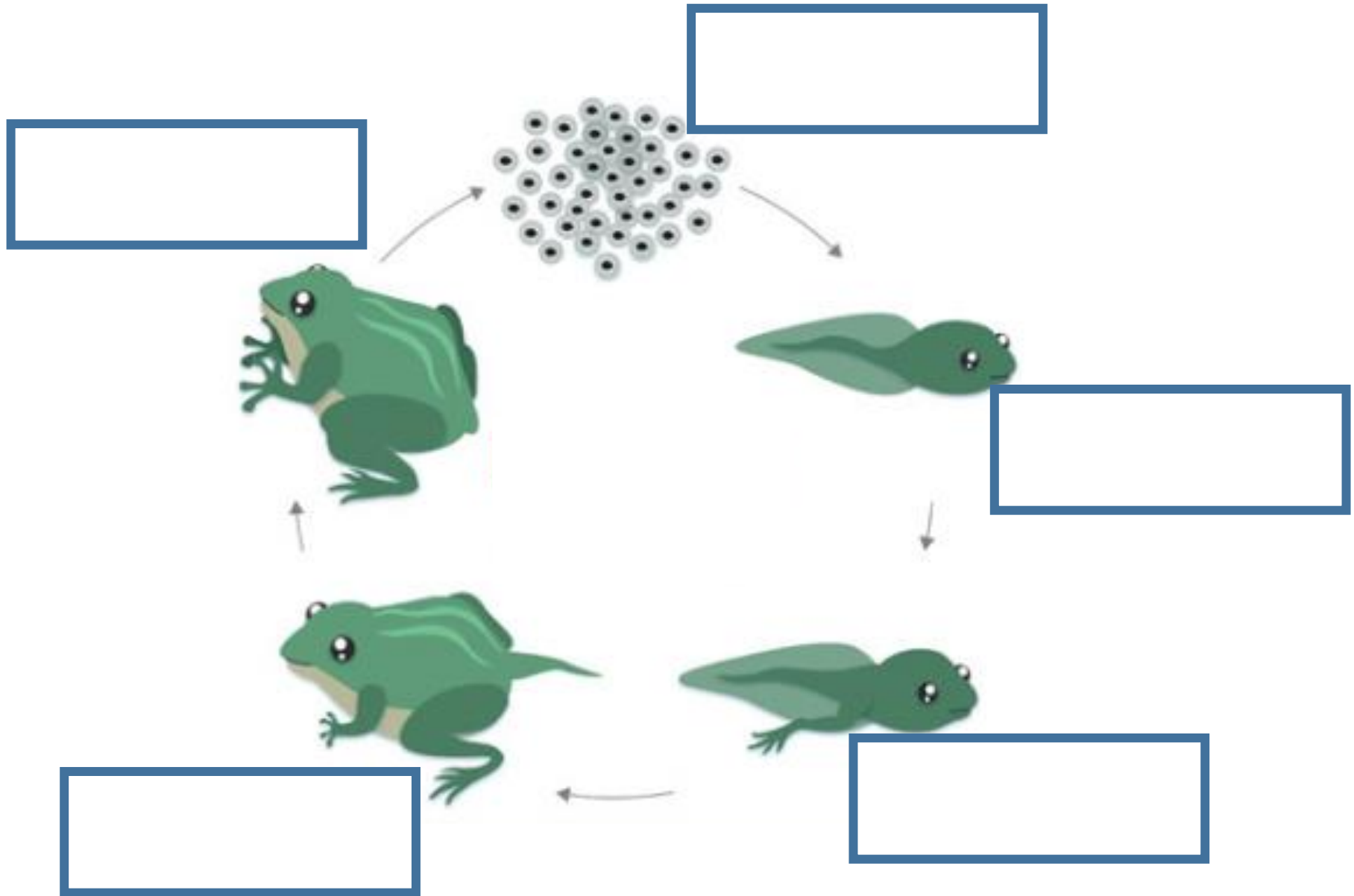
Chicken Life Cycle



Fish Life Cycle



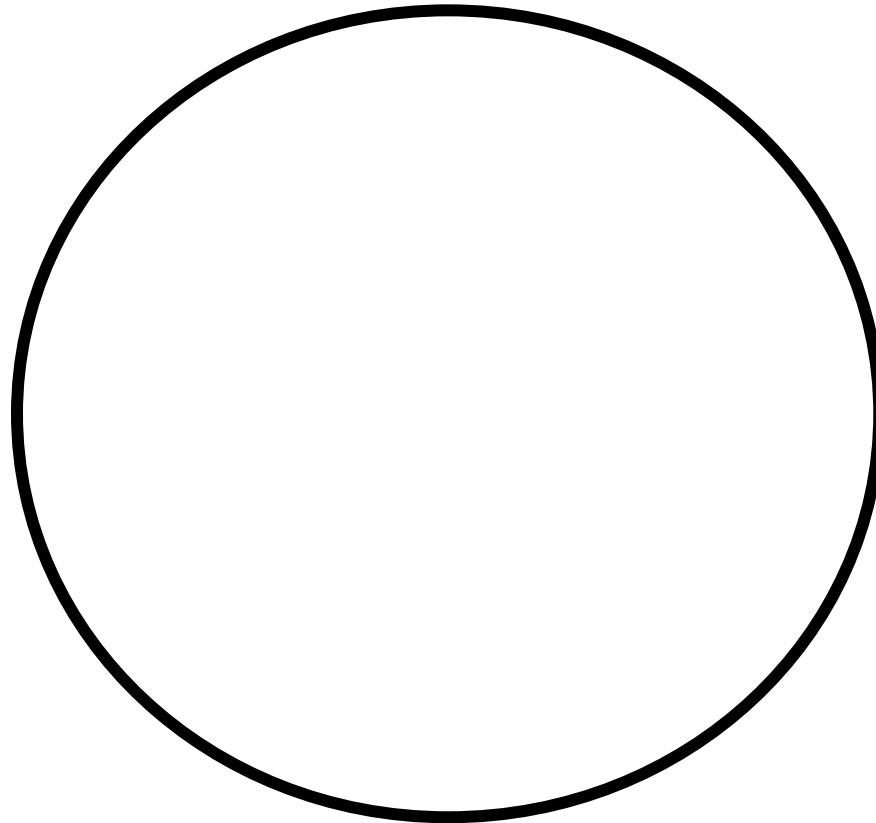
Frog Life Cycle



Cut outs for activities

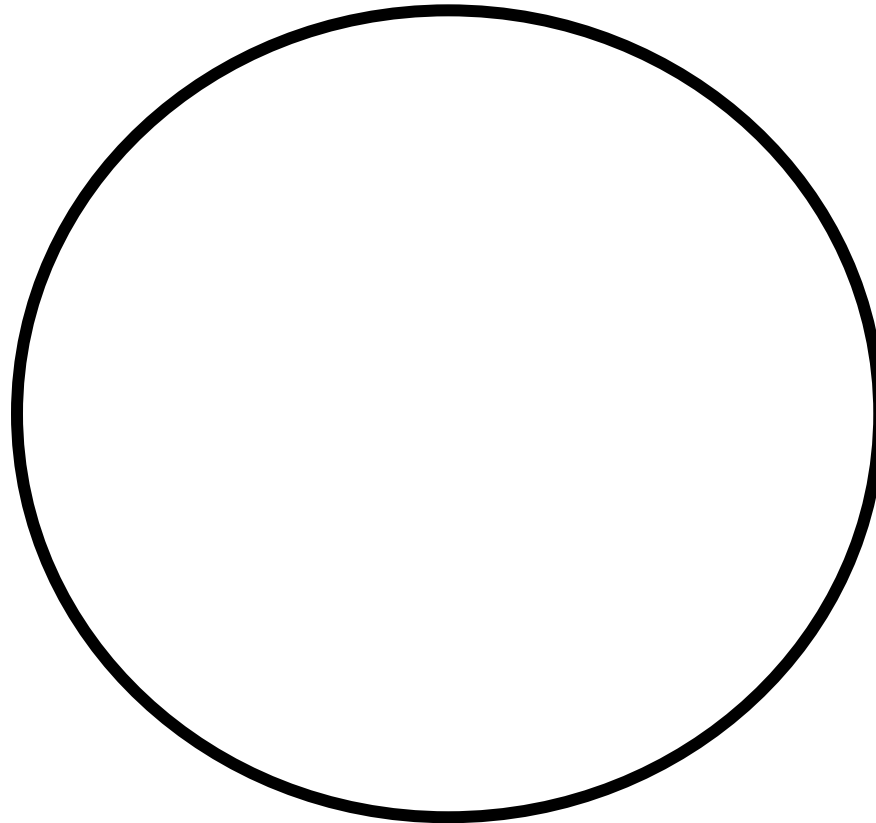
Egg	Hatchling	Chick	Adult Chicken
Egg	Tadpole	Tadpole with legs	Froglet with tail
Adult Frog	Egg	Fry	Adult Fish

Draw the Life Cycle of a Chicken



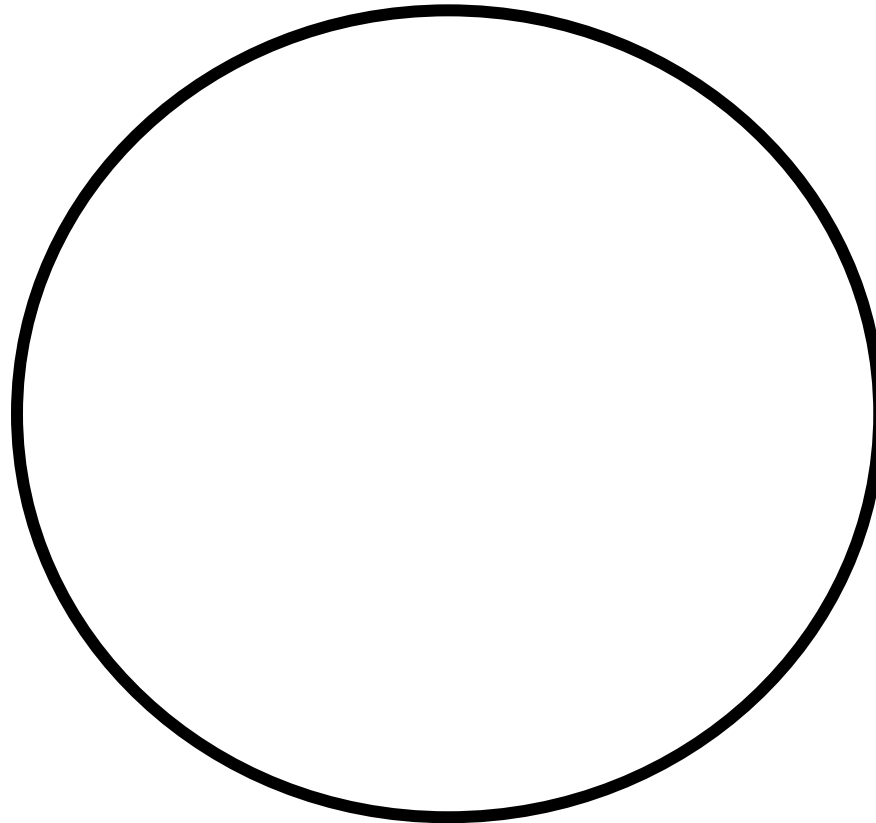
Record the changes that you observe.

Draw the Life Cycle of a Frog



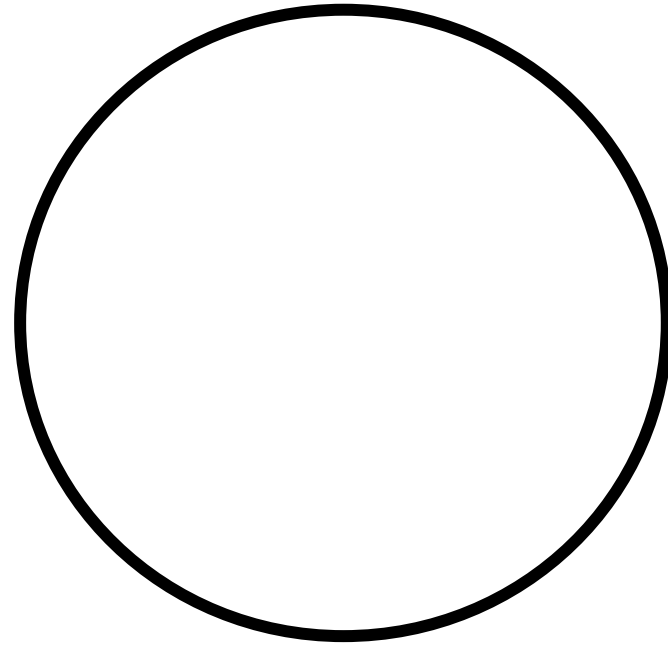
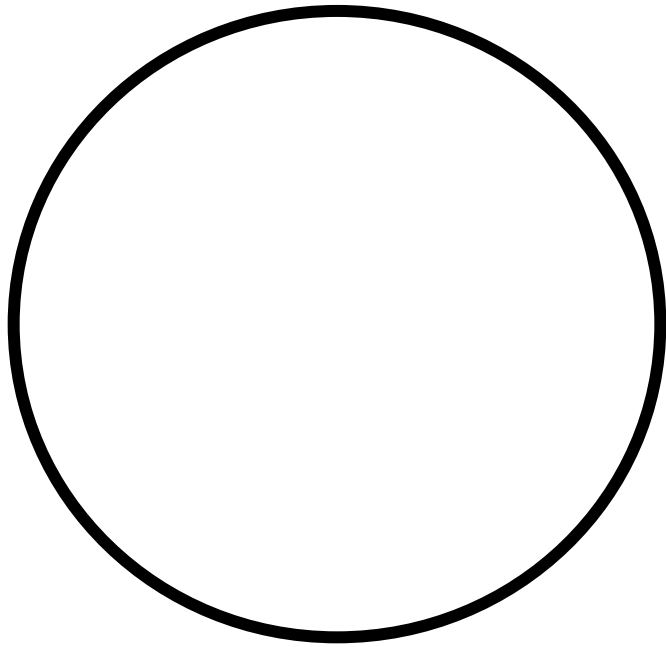
Record the changes that you observe.

Draw the Life Cycle of a Fish



Record the changes that you observe.

Compare the life cycles of a _____ and a _____.



How are they alike? How are they different?
